

FOR SALE



HUMBERSTONE DRIVE HUMBERSTONE LEICESTER LE5 ORD

£269,950

FEATURES

- Freehold
- Sought after location
- 3 Bedrooms
- Kitchen
- Good size garden
- Mid Town House
- Modernisation required
- Lounge / Diner
- Bathroom
- Entrance hallway



 **SETHS**

3 Bedroom Town House for sale in Leicester

GROUND FLOOR

ENTRANCE HALLWAY

Laminate flooring, radiator, staircase leading to first floor, single glazed window

LOUNGE / DINER

25'7" x 10'6"

Carpeted, x2 radiators, single glazed window, sliding door leading to rear garden

KITCHEN

9'4" x 8'3"

Wall and base units with worktops over, sink with drainer, space for freestanding cooker, plumbing for washing machine, space for fridge / freezer, lino flooring, radiator, pantry, single glazed window

FIRST FLOOR

BEDROOM 1

14'0" x 12'7"

Wooden flooring, radiator, storage cupboard, single glazed window

BEDROOM 2

10'7" x 10'7"

Carpeted, radiator, single glazed window

BEDROOM 3

13'2" x 7'1"

Carpeted, radiator, single glazed window

BATHROOM

WC, wash hand basin, bathtub, radiator, lino flooring, partly tiled walls, single glazed window

OUTSIDE

To the front of the property is a garden mainly laid to lawn and wooden fence surround. There is potential to create a driveway (subject to the necessary consent). To the rear of the property is a large garden mainly laid to lawn with wooden fence and shrubs surround. There is the added benefit of a slabbed patio area ideal for outdoor dining.

ADDITIONAL INFO

Tenure: Freehold

EPC rating: tbc

Council Tax Band: A

Council Tax Rate: £1,605.15

Mains Gas: Yes

Mains Electricity: Yes

Mains Water: Yes

Mains Drainage: Yes

Broadband availability: Full Fibre Broadband



UPPINGHAM ROAD OFFICE SALES | 265 UPPINGHAM ROAD, LEICESTER, LE5 4DG

Call us on
0116 266 9977

info@seths.co.uk
www.seths.co.uk

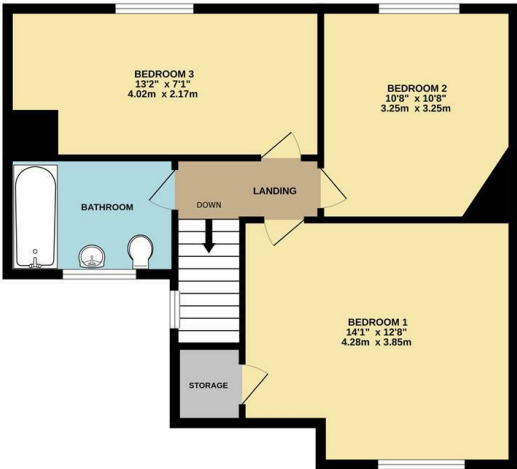
Council Tax Band

A

GROUND FLOOR



1ST FLOOR



Whilst every attempt has been made to ensure the accuracy of the floorplan contained here, measurements of doors, windows, rooms and any other items are approximate and no responsibility is taken for any error, omission or mis-statement. This plan is for illustrative purposes only and should be used as such by any prospective purchaser. The services, systems and appliances shown have not been tested and no guarantee as to their operability or efficiency can be given.
Made with Metropix ©2025



Agents Note: Whilst every care has been taken to prepare these particulars, they are for guidance purposes only. All measurements are approximate and are for general guidance purposes only and whilst every care has been taken to ensure their accuracy, they should not be relied upon and potential buyers are advised to recheck the measurements.

